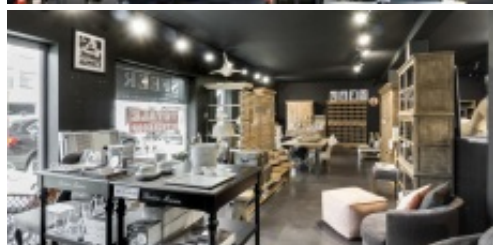


## Ready-to-move-in commercial space (351 m<sup>2</sup>)

**€ 1.100.000**

2820 Bonheiden

 351 m<sup>2</sup>


Ready-to-go commercial space (351 m<sup>2</sup>) with polished concrete floor, underfloor heating, sanitary facilities, alarm and 3 parking spaces (open carport).  
 Lighting, camera security, shop fitting and music system are present but not included in the price (optional).  
 In the heart of the village there is still room for various, local specialised companies, both as shops and in services.  
 Bonheiden is full of motivated entrepreneurs, which makes the village centre important for serving and attracting local customers.  
 Catering is excluded.

## Characteristics

### GENERAL

|                    |                    |
|--------------------|--------------------|
| Address:           | 2820 Bonheiden     |
| Price:             | € 1.100.000        |
| Habitable surface: | 351 m <sup>2</sup> |
| Number of garages: | 3                  |
| Construction year: | 2012               |
| Cadastral income:  | €0                 |
| Availability:      | Onact              |

### LAYOUT

|                   |                    |
|-------------------|--------------------|
| Commercial Space: | 165 m <sup>2</sup> |
| Commercial Space: | 186 m <sup>2</sup> |

### COMFORT

|               |                  |
|---------------|------------------|
| Heating:      | Individual       |
| Kitchen:      | Not communicated |
| Glazing:      | Double           |
| Window frame: | Alu              |

### ADDITIONAL INFORMATION

|                             |                                   |
|-----------------------------|-----------------------------------|
| Urban planning permits:     | Not applicable                    |
| Summons and recovery claim: | Not applicable                    |
| Pre-emption right:          | Not applicable                    |
| Subdivision permit:         | Not applicable                    |
| Flood-sensitive area:       | Not located in a flood-prone area |