

appartement

€ 496.900

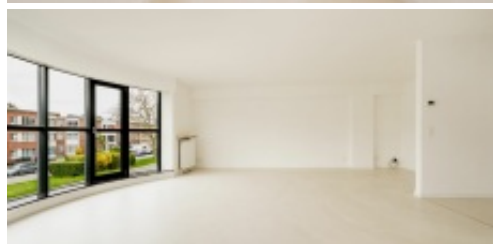
Mechelsesteenweg 159, 2640 Mortsel



3



188 m²



Welcome to your dream home! This beautifully renovated apartment offers everything you are looking for: comfort, style and a perfect location in Mortsel. With a large terrace and 3 spacious bedrooms, this is the ultimate place to live.

- ☑ **Completely renovated:** Enjoy modern comfort with a modern touch. The living space, kitchen and guest toilet are beautifully finished with high-quality mortex floors, creating a seamless and sophisticated look.
 - ☑ **Abundance of Light:** Step into a large living room bathed in natural light. A perfect space for relaxing and entertaining.
 - ☑ **Stylish Kitchen:** The new kitchen is fully equipped with modern appliances, including an induction cooktop with range hood, oven, refrigerator, freezer and dishwasher. A cozy dining area completes this culinary oasis and enjoy on the small terrace that connects, ideal for morning coffee.
 - ☑ **Spacious Bedrooms:** Three comfortable bedrooms, each with direct access to a large rear terrace. One bedroom has a large bathroom with bathtub, double sink and toilet, while another bedroom has a private shower and sink.
 - ☑ **Underground Parking & Large Basement:** You never have to worry about parking with a private underground parking space, plus a spacious basement for additional storage.
 - ☑ **Ideal Location:** Located near the bustling village center of Mortsel and easily accessible via major approach roads. A unique opportunity to move in with no worries, beautifully finished with high quality materials.
- Don't miss this opportunity to find your perfect home! Contact us today for a viewing.

Characteristics

appartement

€ 496.900

Mechelsesteenweg 159, 2640 Mortsel



3



188 m²

GENERAL

Address:	Mechelsesteenweg 159 2640 Mortsel
Price:	€ 496.900
Habitable surface:	188 m²
Number of bedrooms:	3
Number of bathrooms:	1
Number of garages:	1
Construction year:	1990
Renovation year:	2024
Cadastral income:	€1365
Availability:	Immediate

LAYOUT

Entrance Hall:	10.04 m²
Living:	56.9 m²
Kitchen:	12.43 m²
Storage:	7.3 m²
Toilet 1:	3.21 m²
Bedroom 1:	16.96 m²
Bathroom 1:	7.65 m²
Bedroom 2:	25.48 m²
Shower Room:	2.8 m²
Dressing:	0.32 m²
Office:	12.22 m²
Terrace:	16.16 m²
Extra Space:	2.16 m²
Extra Space:	2.16 m²
Basement:	12.5 m²

COMFORT

Heating:	Individual
Kitchen:	All comfort
Glazing:	Double
Window frame:	Alu

EPC

EPC:	110 kWh/m²
EPC level:	B

ADDITIONAL INFORMATION

Urban planning destination:	Living area
Urban planning permits:	Yes
Summons and recovery claim:	No judicial recovery measure or administrative measure
Pre-emption right:	No
Subdivision permit:	Not applicable
Flood-sensitive area:	Not located in a flood-prone area